



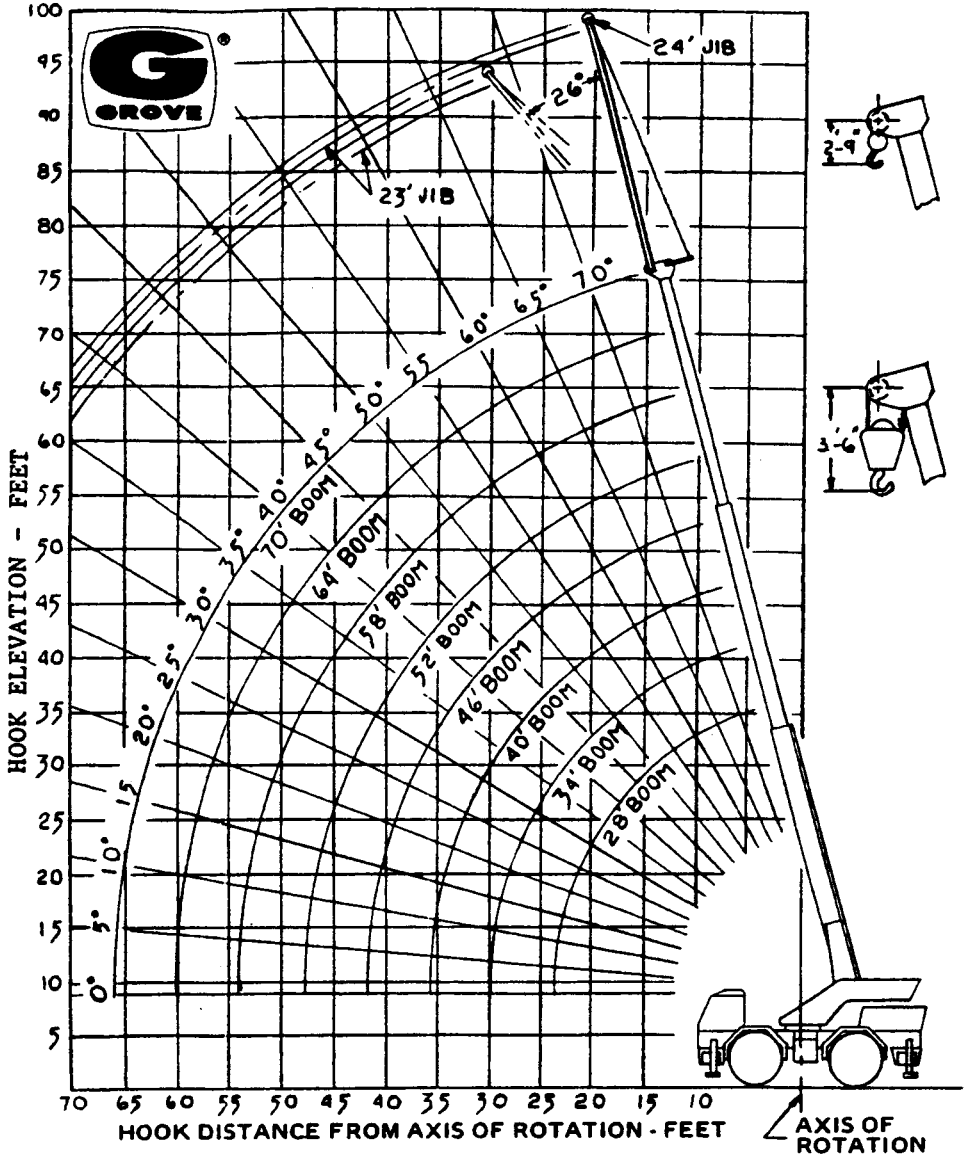
## LOAD CHARTS for Use in CCO Written Examinations

# GROVE RT59S

This load chart has been adapted from the original manufacturer's load chart for use in CCO written examinations.

It is not to be used for any other purpose.

# RANGE DIAGRAM



## IDENTIFICATION

XXXXX

SERIAL NUMBER

RT59/59S

PCSA CLASS 12-66

## RATED LIFTING CAPACITIES IN POUNDS

28 ft. - 70 ft. BOOM

Radius in Feet	OUTRIGGERS FULLY EXTENDED - 360°								* ON RUBBER	
	Boom Length in Feet								Over Front	Over Side
	28	34	40	46	52	58	64	70		
12	30,000	30,000	30,000	29,800	27,800				24,500	14,800
15	27,500	27,500	27,500	27,500	27,000	25,750	23,700		16,600	9,800
20	21,250	21,250	21,000	21,000	20,750	20,500	20,400	20,250	10,300	5,450
25		15,500	15,500	15,500	15,500	15,500	15,000	15,000	6,650	3,660
30			11,700	11,700	11,700	11,700	11,700	11,700	4,850	2,300
35				8,650	8,650	8,650	8,650	8,650	3,380	1,330
40				6,650	6,650	6,650	6,650	6,650	2,680	470
45					5,250	5,250	5,250	5,250	1,525	
50						4,250	4,250	4,250	950	
55							3,460	3,460	635	
60							2,760	2,760		
65								2,180		
66.5						A6-829-000195		1,970		A6-829-000197

Capacities appearing above bold line are based upon structural strength and not on machine stability.  
Capacities do not exceed 85% of tipping loads.

\* Chart based on 16.00 x 24 tires and 80 PSI inflation pressure. Loads must be reduced for lower inflation pressures.

### LINE PULLS & REEVING INFORMATION

HOISTS	CABLE SPECS.	PERMISSIBLE LINE PULLS
MAIN + 40 SECR	1/2 in. - 6x37, EIPS, IWRC 1/2 in. - 19x7, EIPS, Strand	7,200 lbs. 6,150 lbs.
AUXILIARY 40 SECR	1/2 in. - 6x37, EIPS, IWRC 1/2 in. - 19x7, EIPS, Strand	7,200 lbs. 6,150 lbs.

\* For multiple part reeving, use one line for each 5,000 lbs. of load or portion thereof.

**NOTE:** Maximum On Rubber Capacity is 30,000 lbs. Over Front, at 10 Ft. Radius, with a Maximum of 40 Ft. Boom Length.

### WEIGHT REDUCTION FOR LOAD HANDLING DEVICES

23 ft./24 ft. JIB WITH 28 ft. - 70 ft. BOOM	
JIB STOWED	- 360 lbs.
JIB ERECTED	- 1505 lbs.

**NOTE:** All Load Handling Devices and Boom Attachments are Considered Part of the Load and Suitable Allowances MUST BE MADE for Their Combined Weight.

HOOK BLOCKS	
8 Ton, 1 Sheave	180 lbs.
15 Ton, 2 Sheave	200 lbs.
15 Ton, 3 Sheave	260 lbs.
Auxiliary Boom Head	105 lbs.
5 Ton, 9 in. dia. Headache Ball	100 lbs.
5 Ton, 1 1/4 in. dia. Headache Ball	200 lbs.

Weights are for Grove furnished equipment.

# Grove RT59/59S

## JIB CAPACITIES IN POUNDS

### 23 ft. and /or 24 ft. JIB

MIN. BOOM ANGLE	NO OFFSET	MAX. OFFSET 26°
75	6400	3100
70	5150	2850
65	4350	2650
60	3700	2450
55	3300	2275
50	2950	2170
45	2650	2125
40	2550	2085
35	2475	2040
30	2400	2000
26	2300	1950

A6-829-000583

## NOTES TO LIFTING CAPACITIES

1. Rated lifting capacities are based on freely suspended loads. They are the maximum covered by the manufacturer's warranty with the machine leveled and standing on a firm supporting surface. Ratings with outriggers are based on outriggers being extended to their maximum positions.
2. Practical working loads for each particular job shall be established by the user depending on operating conditions; including the supporting surface, wind and other factors affecting stability, hazardous surroundings, experience of personnel, handling of load, etc.
3. Operating radius is the horizontal distance from the axis of rotation to the centerline of the hoist line or tackle with loads applied.
4. "On Rubber" lifting (if permitted) depends on proper tire inflation, capacity, and condition. "On Rubber" loads may be transported at a maximum vehicle speed of 2.5 mi./hr. (4 km./hr.) on a smooth and level surface only.
5. Jibs may be used for single line lifting crane service only. Jib capacities are based on structural strength of jib or main boom. Jib loads must not exceed main boom lifting capacities for the actual operating radius.
6. Operation is not intended or approved for any conditions outside of those shown hereon. Handling of personnel from the boom is not authorized except with equipment furnished and installed by Grove Manufacturing Company.
7. For clamshell or concrete bucket operation, weight of bucket and load must not exceed 90% of rated lifting capacities.
8. Power-telescoping boom sections must be extended equally at all times. Long cantilever booms can create a tipping condition when in extended and lowered position.
9. The maximum load which may be telescoped is limited by hydraulic pressure, boom angle, boom lubrication, etc. It is safe to attempt to telescope any load within the limits of rated lifting capacity chart.
10. With certain boom and hoist tackle combinations, maximum capacities may not be obtainable with standard cable lengths.
11. With certain boom and load combinations, raising of load with boom lift cylinders may not be possible. Operational safety is not affected by this condition.
12. Keep load handling devices a minimum of 12 inches (30 cm) below boom head when lowering or extending boom.
13. If actual boom length is between rated lengths shown, use lifting capacity for the next longer rated length.